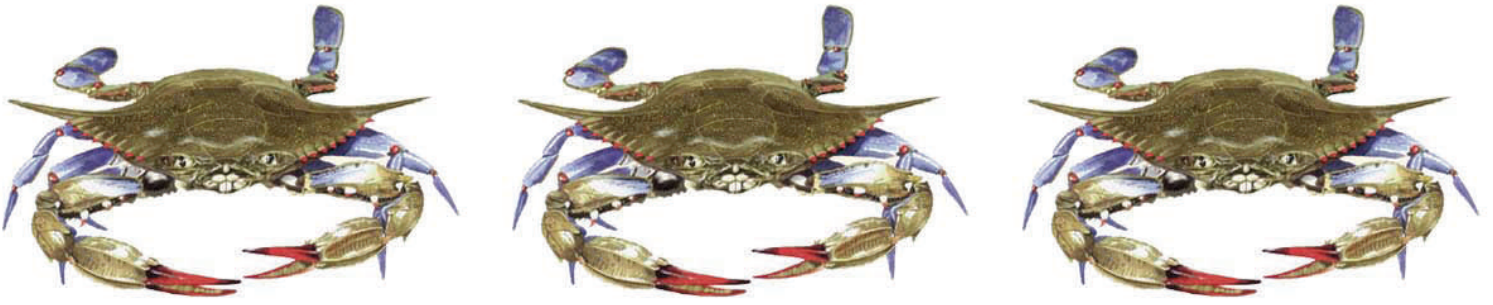


## DATA

### MARYLAND CRAB HARVESTS IN POUNDS

#### 1952 - 2007

1952	27,499,200	1981	57,356,900
1953	26,367,900	1982	41,215,200
1954	19,073,400	1983	48,610,000
1955	15,231,500	1984	46,801,800
1956	21,207,800	1985	55,476,400
1957	28,369,000	1986	48,107,900
1958	27,095,400	1987	44,231,800
1959	21,187,100	1988	44,206,900
1960	27,068,000	1989	45,412,100
1961	26,658,300	1990	50,786,161
1962	27,661,100	1991	49,756,236
1963	16,933,900	1992	29,174,069
1964	22,540,200	1993	59,763,788
1965	31,998,000	1994	44,937,722
1966	30,372,800	1995	42,523,992
1967	24,587,900	1996	37,174,668
1968	9,345,000	1997	43,978,676
1969	23,013,900	1998	29,546,458
1970	24,935,400	1999	33,820,654
1971	26,075,000	2000	21,419,470
1972	23,481,700	2001	24,222,045
1973	19,538,600	2002	25,237,841
1974	24,660,300	2003	26,220,305
1975	24,264,000	2004	32,378,861
1976	19,429,500	2005	33,650,524
1977	20,159,300	2006	28,291,703
1978	16,590,100	2007	21,386,087
1979	24,834,700		
1980	25,304,000		



# MARYLAND CRAB HARVESTS

## 1952 - 2007

